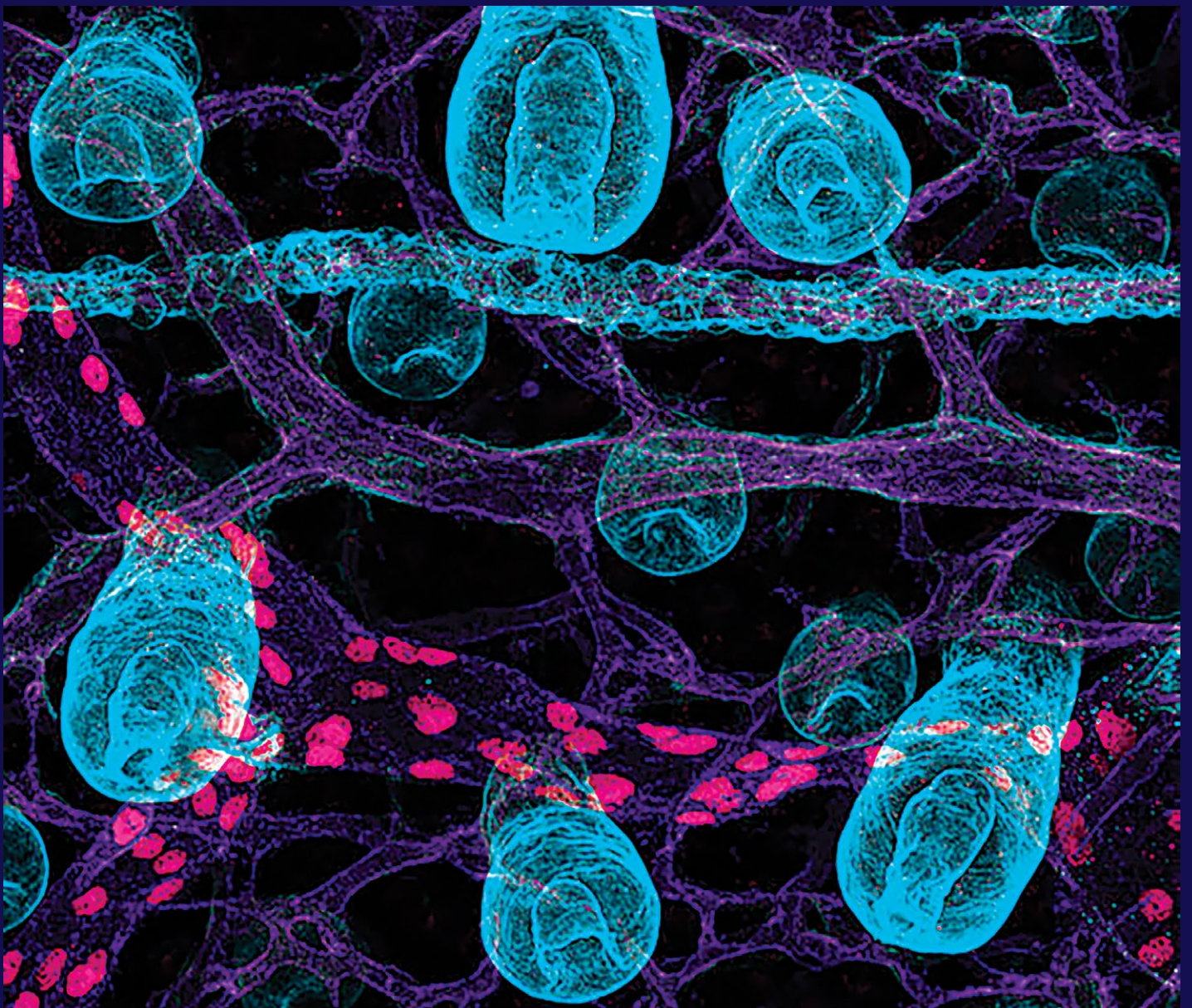


Adelaide University Research Strategy



Reimagined research

Adelaide University's vision is to be a leading contemporary comprehensive university of global standing.

We are dedicated to ensuring the prosperity, wellbeing and cohesion of society by addressing educational inequality through our actions and through the success and impact of our students, staff and alumni. Partnered with the communities we serve, we conduct outstanding future-making research of scale and focus.

Our pursuit to realising the strategic vision and research endeavours will be underpinned by our core values:

Trust

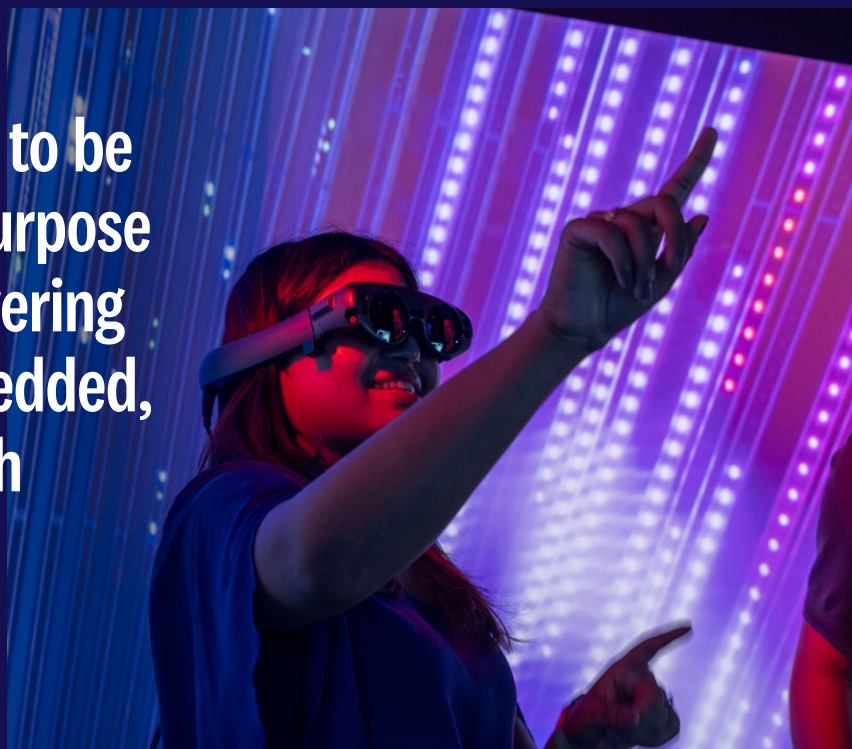
Inclusivity

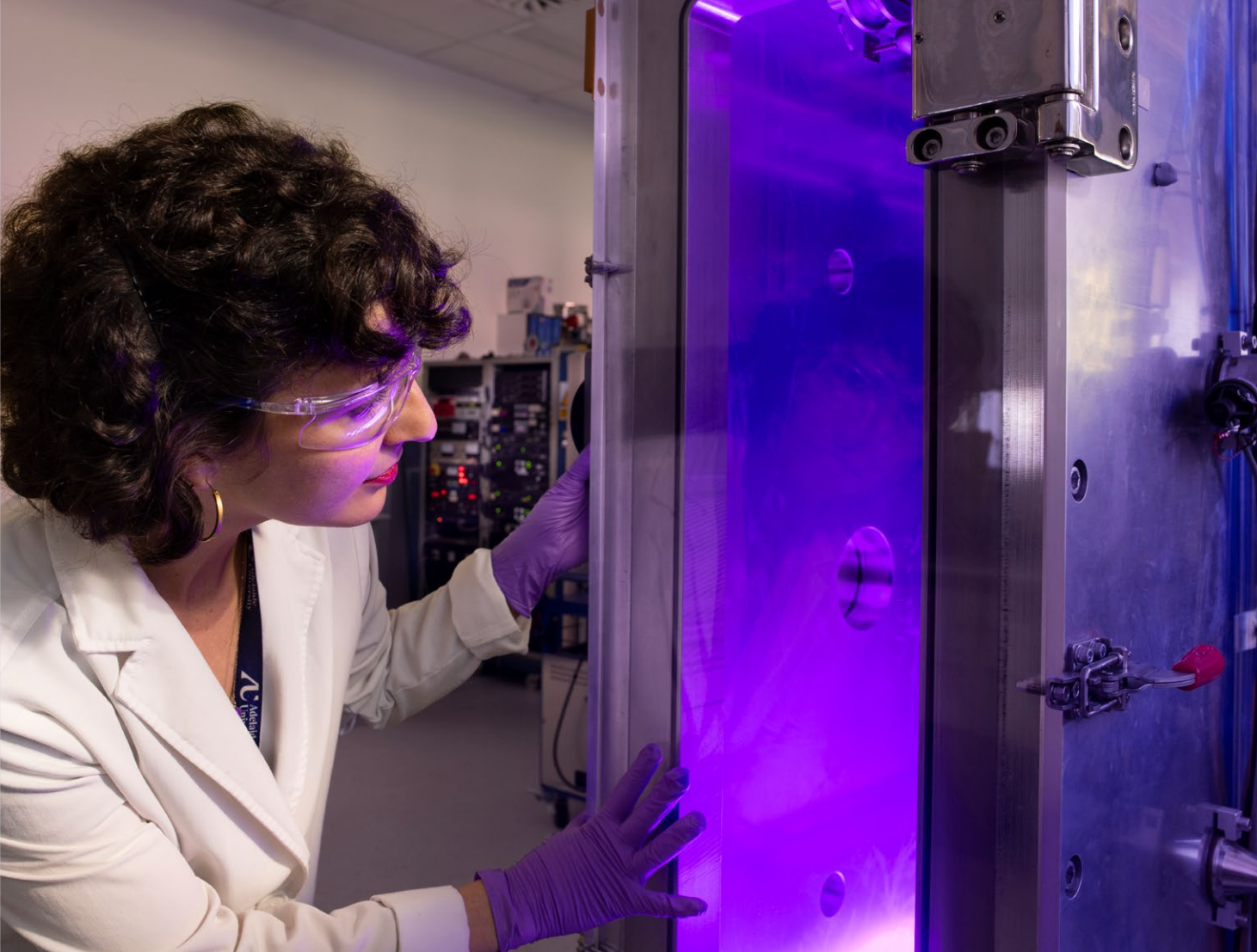
Ambition

Respect

Discovery

Our vision for research is to be Australia's premier for-purpose research university, delivering outstanding locally-embedded, globally relevant research having impact.





Our research ambitions

We aim to be recognised among the world's top 100 universities on an ongoing basis and:



Be globally recognised as Australia's leading for-purpose research university.



Be the research partner of choice and Australia's most industry-engaged university.



Be the destination of choice for the best global researchers, innovators, thinkers, and entrepreneurs in our priority areas.



Be Australia's most connected university, partnering with the communities we serve, and an engine for innovation, productivity and growth.





Five-year Research Strategy framework

Our five Signature Research Themes (SRTs)

Underpinned by Adelaide University colleges,
research institutes and centres



Creative & Cultural



Food, Agriculture & Wine



Defence & National Security



Sustainable Green Transition



Personal & Societal Health

Complemented by an Aboriginal and
Torres Strait Islander Research Strategy

Our research ambitions will inform our research priorities:

Underpinned by the breadth, scale and impact of our research talent and infrastructure

Research excellence and impact

Where will we play?

Conduct research from fundamental discovery across entire value chains, founded on excellence with a clear focus on real-world impact and guided by five Signature Research Themes.

What will we do?

Harness our scale, expertise, infrastructure, and alliances to deliver high-impact research across value chains, from discovery to translation and commercialisation.

Research talent

Where will we play?

Grow a diverse, agile and inclusive research talent ecosystem that empowers success and supports multidisciplinary collaboration aligned with key priorities.

What will we do?

Attract, celebrate and develop research talent through targeted strategic initiatives, mentoring, mobility, recognition, and respectful engagement with First Nations knowledges.

Research training and development

Where will we play?

Deliver nation-leading research training and grow the pipeline of graduate researchers from a wide range of backgrounds.

What will we do?

Offer a differentiated experience for graduate researchers as a highly valued and supported community, through a suite of innovative, flexible and contemporary programs that facilitate professional entry and embed industry engagement, entrepreneurship and development opportunities.

Engaged research translation

Where will we play?

Lead in engaged research translation through a differentiated approach to alliances with industry and community that deliver real solutions and impact.

What will we do?

Streamline research collaboration and translation pathways that leverage institutional capabilities and foster coordinated, partnered collaboration approaches across the university.

Ways of knowing

Where will we play?

Ensure meaningful, two-way collaboration with genuine cultural integration of Aboriginal Torres Strait Islander ways of knowing, being and doing.

How will we win?

Enable world-leading First Nations research with real-world benefits through a dedicated strategy for First Nations research, supported by strong governance, policies and practices.

10 strategic initiatives will support the execution of the Adelaide University Research Strategy and SRT strategies.

We will measure progress and impact through key success metrics:

- Societal and economic impact
- Global and national research rankings
- Graduate researcher experience
- Research income (HERDC)
- Large-scale engaged projects



Our principles and Signature Research Themes

We will conduct multidisciplinary research of the highest global standing through Signature Research Themes (SRTs) that will define South Australia as a test-bed for innovation, connected by an Aboriginal and Torres Strait Islander Research Strategy.

Our research imperative

The achievement of research excellence will be underpinned by the breadth, scale and impact of our research talent and infrastructure. As a Group of Eight university, Adelaide University will continue to protect and foster exceptional fundamental research – recognising it as the foundation of discovery and a vital precursor to multidisciplinary research and translation – especially amid national financial pressures shaping the research agenda. At the same time, we will promote collaboration and multidisciplinary team development through **five Signature Research Themes (SRTs)**, delivered through partnerships and collaboration with industry and the community. Our five SRTs and associated pillars of research focus are outlined on the following page.

Adelaide University colleges, research institutes and centres

Our colleges, research institutes and centres will be the enabling structure for conducting research of the highest global standing and advancing multidisciplinary research.

Adelaide University research will be:

- Engaged and collaborative
- Relevant and meaningful
- Partner-focused
- Informed by First Nations Peoples
- Aligned to, and inspiring, state, national and global priorities
- Linked to graduate researchers and researcher success and experience.





Creative & Cultural

Research pillars

Placemaking
Creative lives
Equitable futures
People and technology
Creative practice



Food, Agriculture & Wine

Research pillars

Plants and animals
Food and beverages
Business and markets
Sustainability and communities



Defence & National Security

Research pillars

Resilient communities
Protective and secure information environment
Safe frontiers
Trusted autonomy
Resilient systems



Sustainable Green Transition

Research pillars

Nature
Industrial systems
Built, production and natural landscapes
Society



Personal & Societal Health

Research pillars

Discovery and personalised health
Lifelong health and wellbeing
Future health systems
Thriving communities
Aboriginal and Torres Strait Islander equity

Central to this approach is genuine partnership with Aboriginal and Torres Strait Islander Peoples and knowledge systems, supported by a dedicated Aboriginal and Torres Strait Islander Research Strategy.

Our differentiators

Our research excellence and impact are fuelled by our unique locations, close campus–industry proximity, world-class research infrastructure, vibrant graduate researcher cohorts, outstanding research talent, and strategic alliances.





The South Australia advantage

As SA's premier university, we harness the state's unique strengths – world-leading renewables, a vibrant creative sector, renowned wine regions, and 'Defence State' status – positioning us as a hub for research and innovation.

Our unmatched position attracts high-value alliances and major investment, making us the go-to institution for tackling both local and global research challenges.



Strategic campus integration

With a regional campus footprint deeply connected to industry, local communities and fundamental research, we benefit from co-location with world-class businesses and institutions, enabling seamless collaboration, productivity and growth.

Our campus network fosters practice and community-led research, creating a unique ecosystem that supports co-designed, real-world and meaningful solutions.



World-class research

We are home to many internationally-renowned research institutes and centres across diverse disciplines, underpinned by advanced infrastructure, high-impact platforms and interdisciplinary research talent.

Our capacity to generate deep domain expertise and innovative solutions positions us as the preferred partner for complex research challenges and top talent.



Extensive research capacity

We have outstanding research talent, giving us capacity to generate high-quality outputs across diverse fields, a large security-cleared defence researcher cohort, cross-value chain capability, and success in securing national grants.

Our scale and expertise drive impactful multidisciplinary research, leveraging credibility to lead projects, deliver dual-use solutions and influence systemic change.



Major ongoing alliances

Through long-term collaborations, including our Defence Partnership, alliances with PIRSA, AWRI, SA Health, major cultural institutions, and the CSIRO, we co-lead impactful, large-scale research.

Our trusted relationships align research with state and national priorities, de-risk collaborations, positively influence policy, and strengthen our strategic value.



High-impact research translation

We lead in significant national programs, such as Cooperative Research Centres and the Defence Trailblazer, and have a strong record of successful commercialisation ventures across the SRTs (e.g. Bygen, Australian Grain Technologies, Myriota and QuantX).

Our tested translation models accelerate research translation, delivering meaningful outcomes, attracting investment, and reinforcing our role in global challenges.

Our priorities

To achieve our ambitions, we will focus on five priority areas.

1 Research excellence and impact

To maintain our research excellence and impact, we will

- Protect and promote respect for academic freedom, recognising that while strategic priorities guide investment, individual researchers retain the right to explore independent ideas
- Champion high-quality discovery research as the foundation of our research endeavour, recognising its essential role in advancing knowledge and enabling long-term impact through our SRTs
- Advance our five SRTs through targeted investment and resource concentration in strategic areas, enabling end-to-end research from discovery to translation and commercialisation
- Promote multidisciplinary research and dual-use technologies by fostering cross-sector collaboration to address complex challenges with real-world applications and global impact
- Align research efforts with state, national, and global priorities through a focused approach that enhances competitiveness for strategic funding and alliances
- Facilitate access and develop leading research infrastructure within the university and across

South Australia to support high-quality, innovative research

- Leverage institutional scale and capability to address intergenerational challenges and build sovereign capability
- Deliver research with local relevance and global impact, positioning South Australia as a test-bed for innovation and the university as a globally recognised leader.

2 Research talent

To support our research talent, we will

- Attract, develop and retain top research talent who contribute to a positive research culture and align with the University's strategic vision, investing in strategic roles to strengthen capacity, capability and connectivity in areas aligned with our SRTs and national priorities, such as research into education
- Establish an agile, inclusive, and sustainable research talent ecosystem that fosters multidisciplinary collaboration, adapts to emerging opportunities, and enhances support for diverse research roles, including academic specialists, First Nations researchers, and industry and community-engaged scholars
- Foster the next-generation of globally connected research leaders by strengthening the pipeline – supporting graduate researchers as well as early and mid-career researchers – and embedding mentoring as a critical aspect of researcher development, alongside targeted recognition and reward mechanisms
- Demonstrate exemplary respect for Aboriginal and Torres Strait

Islander Peoples' knowledge and research by engaging in a process of co-creation that values and embeds Aboriginal and Torres Strait Islander Peoples' ways of knowing in research practice, including dedicated recruitment pathways.

3 Research training and development

To deliver nation-leading research training, we will

- Deliver an excellent and differentiated research student experience through a dedicated Graduate Research School that connects graduate researchers to the broader University community, fostering collaboration and a sense of belonging
- Enhance research training pathways by offering flexible, contemporary programs – including Master of Research (MRes) and Research Graduate Certificates – that promote greater porosity for entry and strengthen connectivity with industry
- Prioritise project-based scholarships aligned with SRTs and pilot a cohort recruitment approach, ensuring internal resources support priorities
- Strengthen the integration of research and training, attracting graduate researchers aligned with state, federal, and industry priorities, and addressing the increasing demand for skilled professionals in key research areas
- Equip graduate researchers with the tools to drive local and global impact by offering internationally recognised qualifications, strong industry and international linkages, and opportunities for entrepreneurial learning

- Position world-class infrastructure as a cornerstone of research training to attract industry partners and research talent, offering access to cutting-edge facilities and collaborative opportunities
- Promote lifelong learning and professional development through structured training, mentorship, and career development programs for researchers and supervisors at all stages of their careers.

4 Engaged research translation

To grow our engaged research translation, we will

- Drive research translation through deep, bi-directional engagement with industry and community alliances, including co-location, to enable mutual knowledge exchange and real-world application.
- Establish a unified, whole-of-University approach to research translation, streamlining support mechanisms and pathways that connect researchers with industry and end users to bring innovations to society.
- Prioritise output-driven, engaged research that delivers meaningful outcomes through activities that are intentional and aligned to research excellence and impact.

- Accelerate research impact through compelling, coordinated alliances that leverages our Enterprise Hub and encourages seamless collaboration across sector-aligned business development teams.
- Advance community-led research that centres 'lived experiences' and delivers real-world outcomes through respectful, co-created alliances.
- Communicate the impact of our research to broad audiences to build the University's reputation for relevant, trusted research that delivers solutions to national and global challenges.

5 Honouring diverse ways of knowing

To amplify our commitment to equitable and inclusive research we will

- Cultivate a culture that respects the knowledges, values, and perspectives of all disciplines and paradigms, including those of Aboriginal and Torres Strait Islander Peoples, embedding an appreciation for unique ways of Knowing, Being, and Doing.
- Celebrate the role of practice-based research methods and outputs in knowledge creation, valuing their potential for high levels of engagement and

impact in community, industry and society.

- Commit to excellence in ethical and equitable research environments – ensuring access to participate in and lead research for communities who have been marginalised, underrepresented or historically excluded from research processes and outcomes.
- Insist on a collaborative approach to all partnered research, where impact is valued alongside income, and values are embedded in value creation.
- Bring together Aboriginal and Torres Strait Islander research cohorts from across SRTs through a dedicated First Nations Academy – a home for relevant talent, including fellows and PhD scholars.
- Commit to embedding new and best practice Indigenous Cultural Intellectual Property practices at Adelaide University – leveraging institutional resources to empower Aboriginal models of governance to meet contemporary needs, inclusive of data sovereignty.



Our strategic enablers

Our research impact and outcomes will be accelerated by six strategic enablers.



Research talent

Attract, celebrate, and develop research talent and a culture for multidisciplinary collaboration through targeted strategic talent initiatives. Support this with comprehensive systems and processes that reward and recognise the full breadth of research contributions – beyond traditional publications. This includes interdisciplinary research, social and policy impact, partnered and engaged research, First Nations contributions, and other outcomes that demonstrate research excellence, performance, and real-world impact.



Broader operating model

A clear operating model with enabling services to support researchers and students across the University. In particular, a strong collaboration with college support mechanisms including Deans of School and Research, and collaboration with the International and External Engagement Portfolio to deliver a unified and coordinated approach to engaged research and impact.



Research accelerator fund

A dedicated research accelerator fund for the SRTs, providing rapid seed investment for high-potential research projects with strong impact potential. It catalyses innovation, translation and venture creation, accelerates development, fosters multidisciplinary collaboration, and leverages external investment to amplify research solutions for real-world outcomes.



University budget model

The budget model will support the delivery of the research strategy by aligning funding principles with strategic priorities and enabling transparent, timely investment in areas of greatest impact.



Dedicated research support

Service delivery of Research Services, Research Infrastructure, Research Translation, and enabling digital systems and compute capabilities through a tiered model, where strategically significant research (prioritised via clear, consistently applied guidelines) receives comprehensive at-elbow support from locally-deployed teams aligned to Colleges or SRTs.



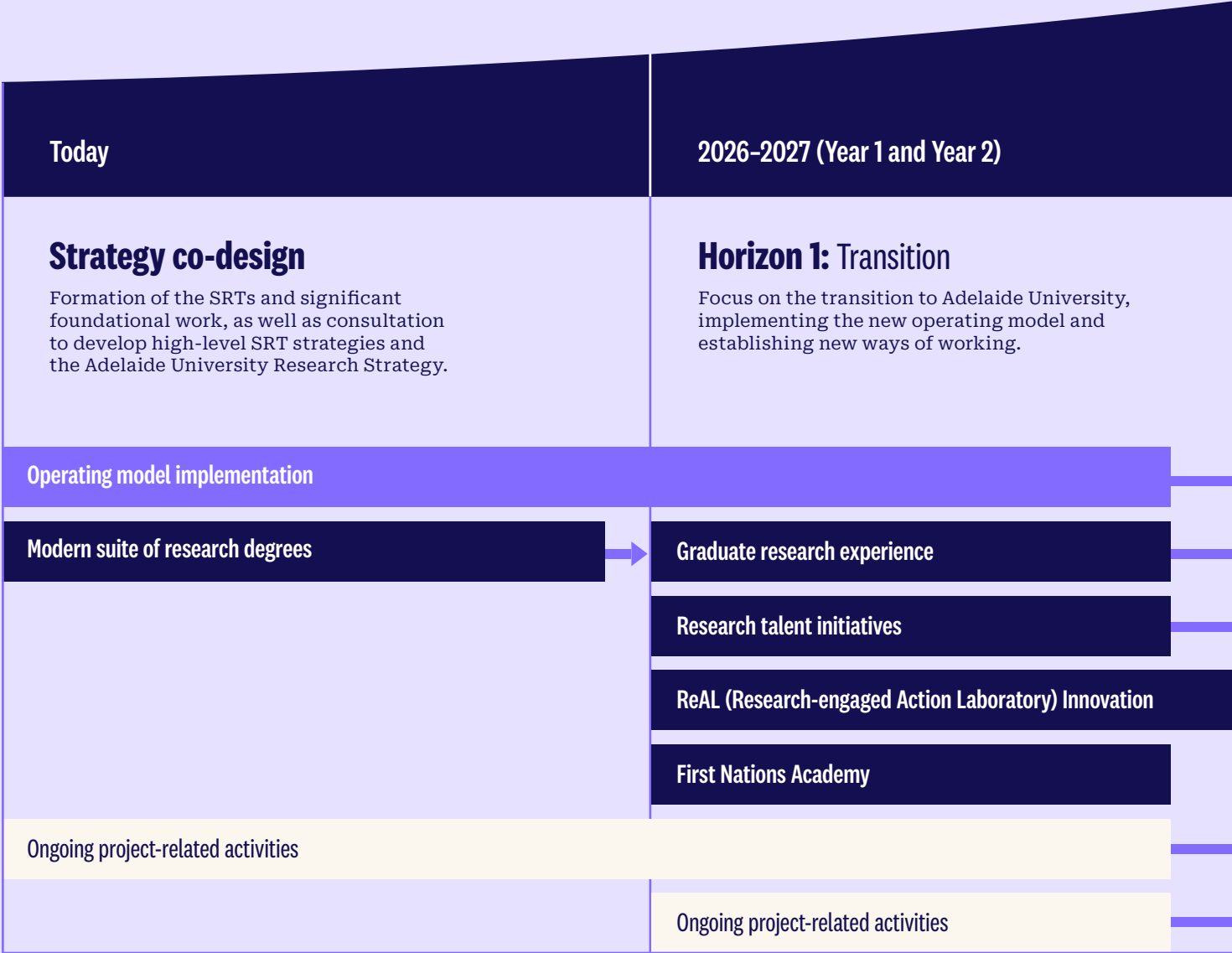
Masters of Research (MRes)

A new Master by Research as part of a flexible set of research training degrees that allows greater porosity for entry. Our degrees develop excellent research skills, foster strong industry connections within the wider university community, and produce sought-after graduates capable of driving impactful research contributions both locally and globally.



Strategic initiatives

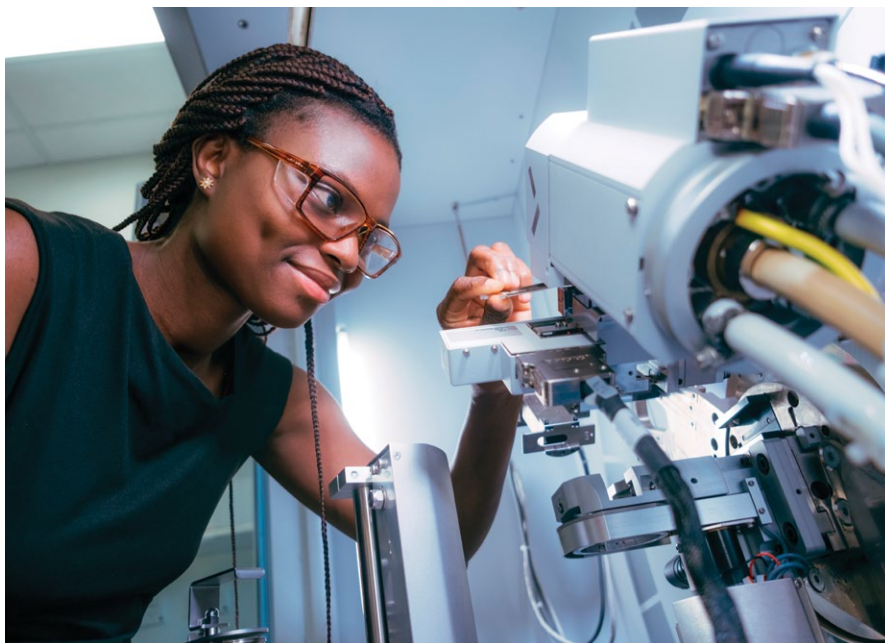
A suite of strategic initiatives, both in progress and emerging, will drive the execution of our research strategy and advance our ambitions over three time horizons.





Strategic initiatives (cont.)

These initiatives reflect our commitment to delivering on the five priority areas.



Research translation

Establish the research translation function to provide research translation, commercialisation and research business development services, with centrally-managed locally-deployed SRT-aligned support. Expand research translation capabilities across the full value chain.

Australian Defence Technologies Academy

Build a national defence industry research centre at Lot Fourteen, featuring world-class facilities to co-locate Adelaide University, industry and government in a secure space to develop innovation-led learning and create sovereign capability and the workforce of the future.

Centralised research infrastructure

Transition through to a transformed state for managing and governing Adelaide University's research infrastructure (RI), including strategic and high-priority RI, centrally-managed, hybrid RI under central oversight, and locally managed RI maintained at the structure level.

Operating model implementation

Implement the Research & Innovation portfolio operating model, including workforce transition, new ways of working, and an enhanced service delivery model. Establish a dedicated Graduate Research School to achieve the ambition of delivering leading research training.

Graduate researcher experience

Deliver an unparalleled graduate research experience through personalised support and development that enriches each graduate researcher's unique journey within engaging, SRT-aligned cohorts, where they feel valued, heard and championed as integral members of our research community.

Modern suite of research degrees

Deliver innovative, flexible and accessible Masters of Research (MRes) pathways, supported by equity scholarships for graduate researchers in need, and offer Research Graduate Certificates to enhance exposure to research and pathways to the MRes.

Research talent initiatives

Recruit targeted industry/academic talent, enabling professionals to teach and establish industry-relevant, cross-disciplinary engagement. Introduce cohort-based PhD scholarships aligned to SRTs and a training platform for researchers to upskill in impact and translation to support funding success.



First Nations Academy

Establish a dedicated First Nations Academy, serving as the connecting 'structure' across SRTs and the home for relevant talent, including fellows and PhD scholars. The Academy will be resourced to attract, steward and mentor talent, and support the implementation of the Adelaide University Research Strategy.

Northern Gateway Health Precinct

Establish a hub in the Northern Adelaide region to tackle health inequity drivers through community alliances, leveraging strengths in education, the Australian Centre for Child Protection, and social research.



ReAL Innovation

A new model of engaged research – fostering two-way alliances with industry and community, generating new knowledge and research outcomes that drive real-world impact. ReAL manifests as a series of enablers across the University, nuanced to each SRT but unified by a common purpose: advancing locally embedded, globally relevant research. The model is anchored by physical locations (e.g. labs, hubs) that provide accessible, hands-on support for researchers and partners.

Strategic initiatives (cont.)

ReAL takes different forms across SRTs, connecting researchers with communities to innovate through locally embedded, globally relevant research solutions.

ReAL Innovation (Research-engaged Action Laboratories)

ReAL - Agriculture

A hub-and-spoke construct anchored by our Waite and Roseworthy campuses, and the Mortlock and Davies Trusts, that connects across all Adelaide University locations and ReAL Innovations, to drive partnered research in strategic pillars of agriculture, with priorities aimed at adding value to primary produce.

ReAL - Creativity

Connects and amplifies creative and cultural practices, influencing local and global creative industries and cultural policy, and using creative solutions to unlock complex industry challenges that shift traditional ways of working.

ReAL - National Security

Encompasses end-to-end development, from early-stage co-design and rapid prototyping to security testing and validation, critical analytical insights into social and legal aspects of Australia's national security, accelerating translation toward The Australian Defence Technologies Academy (ADTA), all within a secure, agile environment.

ReAL - Healthy Societies

Enables and connects multidisciplinary academic research to industry and community, employing central and local hubs to drive research translation for enhanced quality, policy, efficiency, transformation, and impact, to improve health and society.

ReAL - Sustainability

Accelerates the 'net zero' transition and home-grown job creation by connecting sustainability research from across Adelaide University with the regions, in research areas including business, law and economics, built environment, conservation and biodiversity, intense farming, forestry, energy and resources, allied health, policy and First Nations.

ReAL - Policy & Government

Connects policy-makers, communities and researchers to co-design and evaluate innovative legal, social and economic frameworks, translating research into practice to tackle housing, education, justice, aged care, and climate challenges for a fairer, more resilient society.

ReAL - Whyalla

Centred on our Whyalla campus with a focus on local opportunities – including critical resources, green iron and health – ReAL Whyalla provides connectivity to research capacity across all Adelaide University locations and all ReAL Innovation initiatives, to drive regional socioeconomic progress.

ReAL - Mount Gambier

Centred on our Mount Gambier campus, with a focus on local industries including forestry and wine, ReAL Mount Gambier provides connectivity to research capacity across all Adelaide University locations and all ReAL Innovation initiatives, to drive regional socioeconomic progress.

ReAL - Space

ReAL Space unifies key Adelaide University infrastructure and expertise across campuses (e.g. Australian Institute for Machine Learning (AIML), Extraterrestrial Environmental Simulation (EXTERRES) laboratory, Trailblazers, Cooperative Research Centres (CRCs) to drive space innovation in fields including human factors, governance, sustainable agriculture, automated construction, and low impact resource processing.



Further enquiries

Adelaide University
SA 5005 Australia

adelaideuni.edu.au/research

facebook.com/adelaideuni

linkedin.com/school/adelaideuni

youtube.com/@AdelaideUniAustralia

instagram.com/adelaideuni

tiktok.com/@adelaideuni

The content in this publication is for general information only and Adelaide University makes no representation about its accuracy, completeness or suitability for any purpose. It is subject to change, and you can find updated information on our website at **adelaideuni.edu.au**

Printed July 2025.